



Anbolife 1.9L Electric Slushie Maker for Ice Cream and Frozen Juice

Our Product Introduction

Basic Information

- Minimum Order Quantity: 2000 pieces
- Price: \$78/pieces 2000-99999 pieces

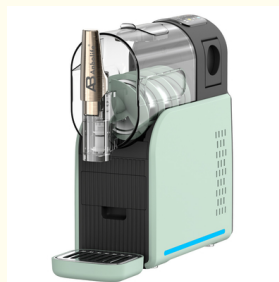


Product Specification

- After-sales Service Provided: Free Spare Parts
- Warranty: 1 YEAR
- Energy Efficiency Rating: Class A
- Operating Language: English
- Application: HOTEL, HOUSEHOLD
- Power Source: Electric
- App-controlled: NO
- Private Mold: Yes
- Packaging Types: Corrugated Box
- Type: Home Ice Cream Maker
- Capacity (Quart): 1.9L
- Power (W): 200W
- Place Of Origin: Zhejiang, China
- Brand: Anbolife



More Images



for more products please visit us on airfryerfactory.com

Product Description

8 Menu Options 1.9L Electric Automatic Slushie Maker for Smoothies Ice Cream and Frozen Fruit Juice

Product Specifications

Attribute	Value
Brand	Anbolife
Model Number	01
Capacity	1.9L
Power	200W
Material	Plastic, ABS
Energy Efficiency	Class A
Warranty	1 YEAR
Place of Origin	Zhejiang, China
Applications	Hotel, Household, Commercial

Key Features

- RapidChill Technology freezes liquid evenly for perfect icy treats
- Turn liquids into smooth, flavorful frozen drinks
- 4 preset settings with 8 menu options
- Customizable output thickness
- Easy to clean with dishwasher-safe parts
- Creates slush quickly and keeps drinks frozen for up to 12 hours
- Free spare parts provided
- Customized color options available

Product Images





Frosty Creations Endless Inspirations





Professional Frozen Drink Maker

Quick Cooling | Compact Design | Easy to clean





Great Features Making a Big Difference



—
Quikool Rapid
Cooling Technology



—
6 presets, temp.
adjustable



—
Covenient cup supporter
and storage compartment



—
Sleek Profile
Effortless Storage





One System, enjoying multiple flavors





Frappe



Milk Shake



Soft Ice Cream



Frozen Juice

PRESETS

6 unique presets use Quikool Technology for the perfect temperature for your ideal frozen drink.

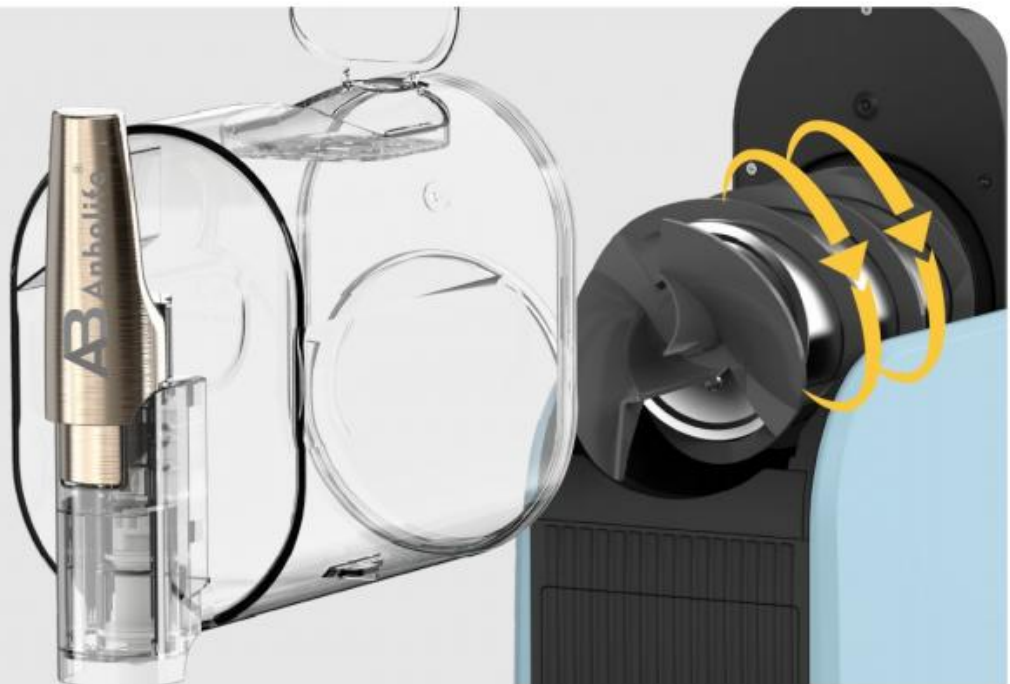
6 PRESET SETTINGS



TEMP. CONTROL

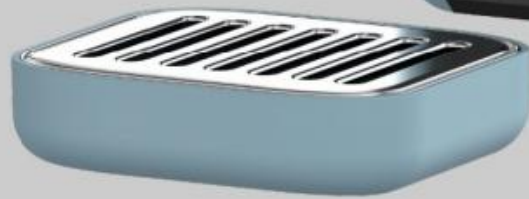


Each preset will start at a default/optimal temperature for ideal texture. If desired, adjust the temperature level for your perfect frozen drink texture.



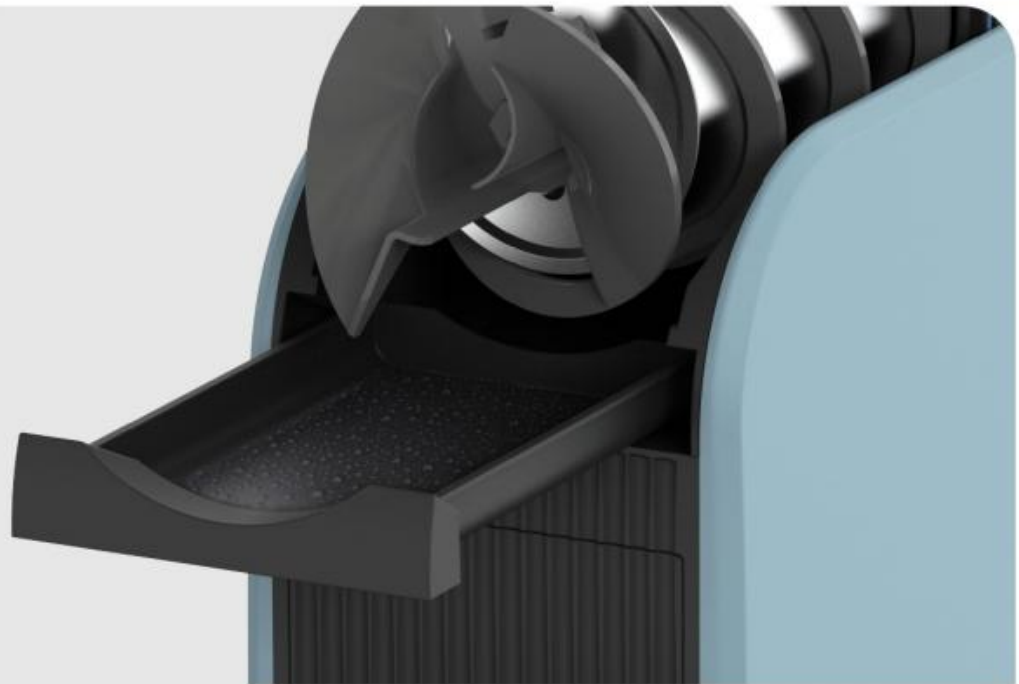
Detachable Drink Vessel

Easy cleaning through rinse cycles and detachable smoothie blender components.



Magnet Drip Tray

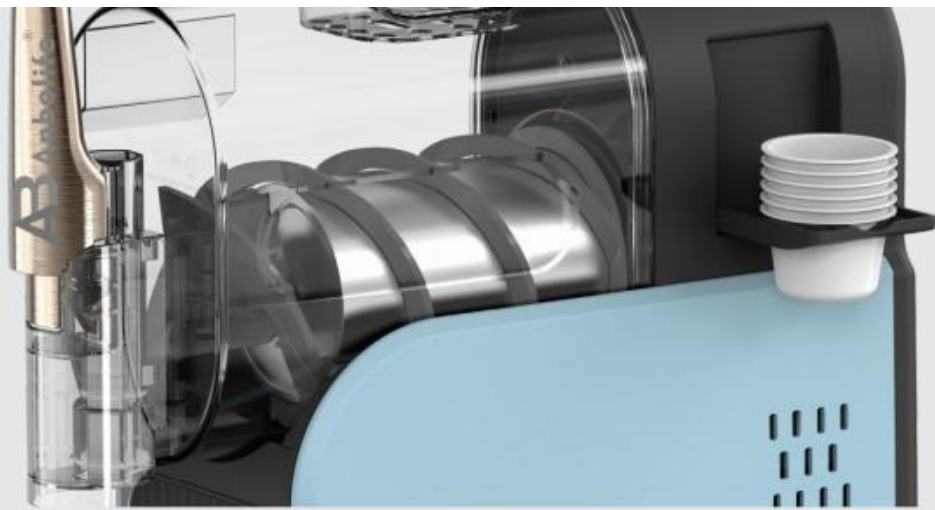
Magnet connection for perfect user experience.



Condensation Catch Tray

Remove the material cylinder, then detach the condensate tray for easy drainage.





Foldable Cup Holder

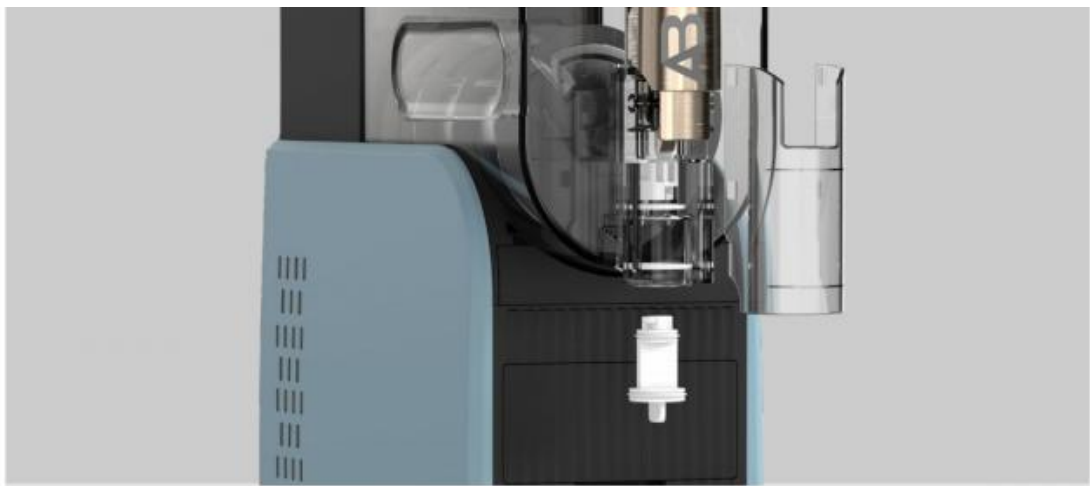
Space-saving when folded, expands to accommodate beverage cups.



Convenient Storage Container

Container for cleaning supplies (soft-bristle brushes, sponge scrubbers, etc.)





Folding Spout Handle with Removable Shield and outlet

Detachable faucet group for easy cleaning.



Ambient Light Strip

Superior user experience with color shifting immersive ambiance creation.

Operation Instructions



1. Easy to fill up, top off, and remove for cleaning. Creates slush quickly and keeps drinks frozen for up to 12 hours.*



2. 6 preset settings: Classical Slush, Cooktail, Frappe, Milk Shake, Soft Ice Cream, Frozen Juice. Temperature control lets you customize whether you want the output to be thicker or thinner than the preset.



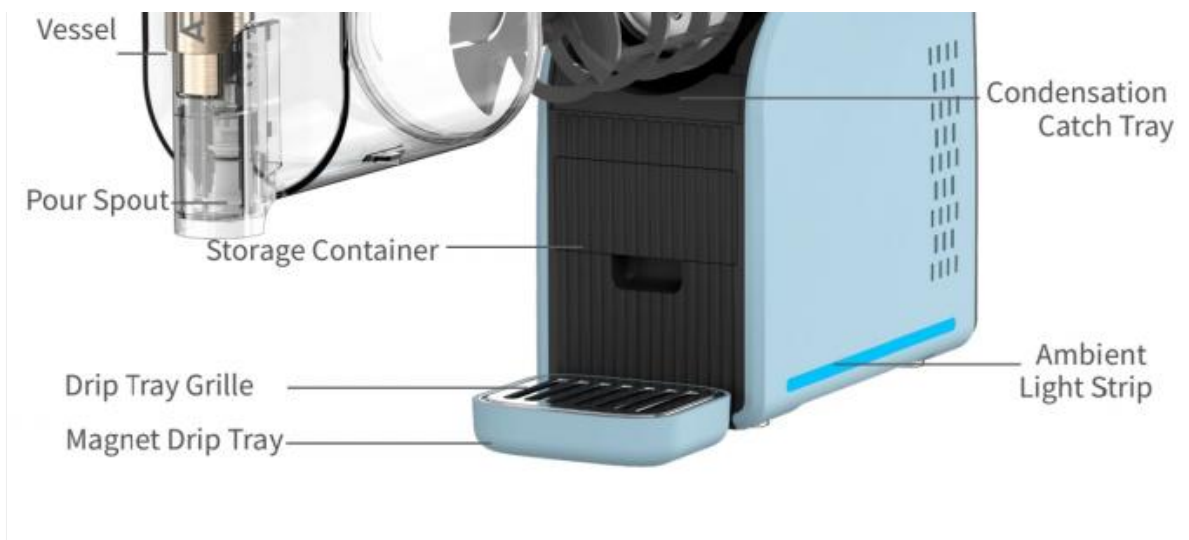
3. Ergonomically designed comfortable handle, drip-free and mess-proof.



4. Disassemble the material tank, then remove and clean the mixing screw.

Exploded Diagram





Frequently Asked Questions

1. Who we are?

We are based in Zhejiang, China, starting from 2014. We sell to South America (15.00%), Southeast Asia (15.00%), Mid East (13.00%), Eastern Asia (12.00%), North America (10.00%), Oceania (10.00%), Eastern Europe (10.00%), Western Europe (8.00%), Southern Europe (7.00%). There are total about 11-50 people in our office.

2. How can we guarantee quality?

Always a pre-production sample before mass production; Always final inspection before shipment.

3. What can you buy from us?

Home Appliance, Personal Care Products.

4. Why should you buy from us not from other suppliers?

1. Well informed make sure super R&D ability & advance technology application. 2. Advanced government for production make sure for superior quality and fast delivery. 3. Most certificates and approval available to meet different market standards.

5. What services can we provide?

Accepted Delivery Terms: FOB, CFR, CIF, EXW, DDP, DDU. Accepted Payment Currency: USD, EUR. Accepted Payment Type: T/T, L/C, D/P D/A.

Contact Us

 	<p>Tony: General Manager</p> <p>☎ +86-15355165639</p> <p>✉ tony@anbolife.com</p>	 
 	<p>— AB Anbolife® —</p> <p>☎ +86-19045852162</p> <p>✉ as01@anbolife.com</p>	 

Company Introduction



Anbolife Electric Co., Ltd. is a professional smart home factory, the company is located in Ningbo City, Zhejiang Province, China, which is the air fryer products and electric home appliance hometown.

We are very experience. The smart home electric products manufactured by our factory is mainly exported to more than 80 countries such as the United States, South America, Europe, AU and Southeast Asia, with a huge scale.

Our company has a professional team and technology. Our products are not seasonal and suit everyone. We always insist on quality first. Our products can be customized according to customers' requirements. They are suitable for daily travel, home life, long-distance travel and so on. We aim to serve our customers and focus on brand, quality and price advantages.

Hope to keep harmonious development with partners all over the world.

◆ **CERTIFICATE** ◆



AB Zhejiang Newle Electric Appliance Co., Ltd.

☎ 15355158390

✉ amy@newlechina.com

🌐 airfryerfactory.com

789th, Qiming Road, Yinzhou District, Ningbo City